

Unit 1

New Concepts

Introducing *MI*, *SO*, and *LA*

Three-Tone Scale: *MSL*

$\frac{2}{4}$ Time: 2 Beats Per Bar

Measure, Bar, Double Barline

ta ♪ and *ti-ti* ♪♪

1

2 Beats Per Bar

ta

ti-ti

Measure or Bar

Rain, Rain, Go Away
(Nursery Rhyme)

S M S S M S S M L S S M ↗

Solfège

Double Bar Line
(End of Song)

Detailed description: A musical staff in treble clef with a 2/4 time signature. The staff contains a melody of eighth notes. The notes are labeled with solfège syllables: S, M, S, S, M, S, S, M, L, S, S, M. Above the staff, a box labeled '2 Beats Per Bar' points to the first two notes. A box labeled 'ta' points to the first note. A box labeled 'ti-ti' points to the second and third notes. A box labeled 'Measure or Bar' points to the first measure. At the end of the staff, a box labeled 'Double Bar Line (End of Song)' points to the double bar line. Below the staff, a box labeled 'Solfège' points to the first note. The title 'Rain, Rain, Go Away (Nursery Rhyme)' is written above the staff on the right side.

*Men's voices may perform all treble clef exercises down an octave.

Skill Builder: Rhythm Syllables

Use rhythm syllables for the following exercises.

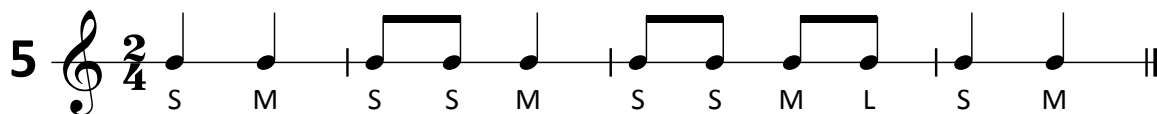
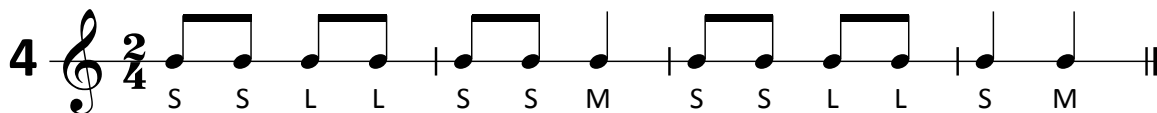
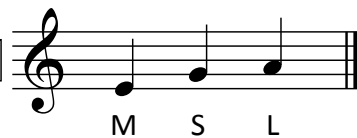
Rhythm Syllables



Skill Builder: Solfège

Follow the rhythm and create the pitches to match the solfège.

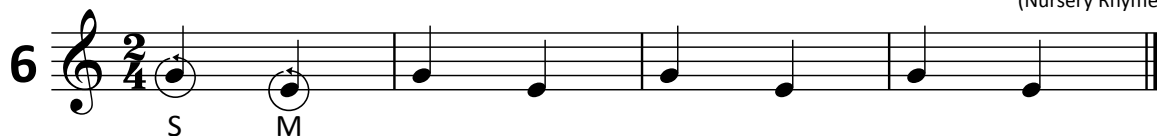
Three-Tone Scale



On the Staff

When the keynote is C, *SO* is on line 2 and *MI* is on line 1.

Counting Song
(Nursery Rhyme)



Cuckoo, Where Are You?
(Nursery Rhyme)



LA is the note directly above **SO**. **MI**, **SO**, and **LA** form the three-tone scale.

Bounce High, Bounce Low
(Children's Singing Game)

8

S L

Snail, Snail
(Children's Singing Game from England)

9

S

Star Light, Star Bright
(Children's Song from New York)

10

S

Skill Builder: Hand Signs

Use hand signs for the following exercises.



Lucy Locket
(Nursery Rhyme)

11

S

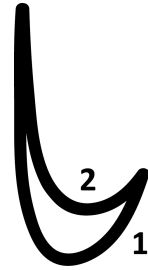
Bye, Baby Bunting
(Children's Song)

12

S

Skill Builder: Conducting

Use the 2-pattern to conduct the following exercises.



Bobby Shaftoe
(American Folksong)

13

Hammer Ring
(Folksong from Georgia)

14

Creative Sightsinging

Sing Songs Concurrently: Divide into two groups. Sing the following folksongs simultaneously. Pay particular attention to unison pitches that they remain absolutely in tune between the two groups.

15

Group 1

Group 2

Blue Bells
(Nursery Rhyme)

The Mill Wheel
(Children's Singing Game)

Unit 2

New Concepts

Keynote G (1 Sharp)

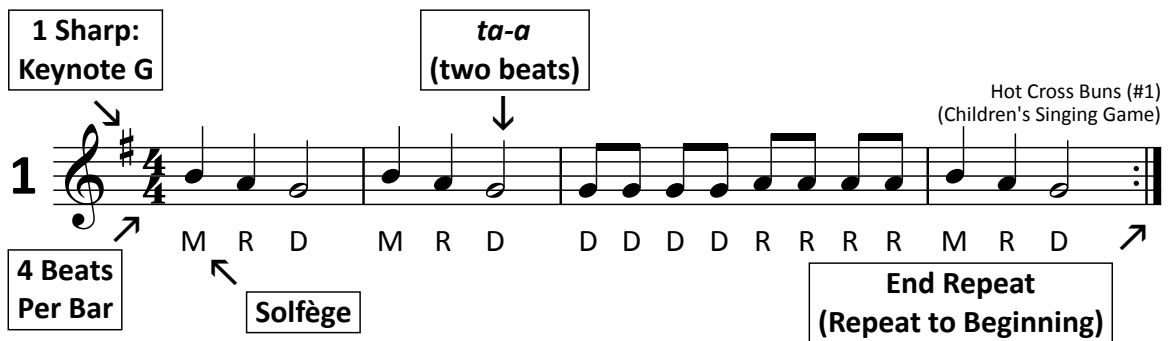
Introducing *DO* and *RE*

Pentatonic Scale: *DRMSL*

$\frac{4}{4}$ Time: 4 Beats Per Bar

Repeat Sign

ta-a 



1 Sharp: Keynote G

ta-a (two beats)

Hot Cross Buns (#1)
(Children's Singing Game)

4 Beats Per Bar

Solfège

End Repeat
(Repeat to Beginning)

M R D M R D D D D R R R M R D

Skill Builder: Hand Signs

Use hand signs for the following exercises.



13 S

14 S

Creative Sight Singing

Quick Canon: Divide into two or more groups. Sing the following folksongs with each group entering a beat apart. Use of the metronome will ensure that all groups maintain a steady pulse.

Exercise 1 S

Exercise 2 M

Exercise 3 D

Unit 3

New Concepts

Keynote F (1 Flat)

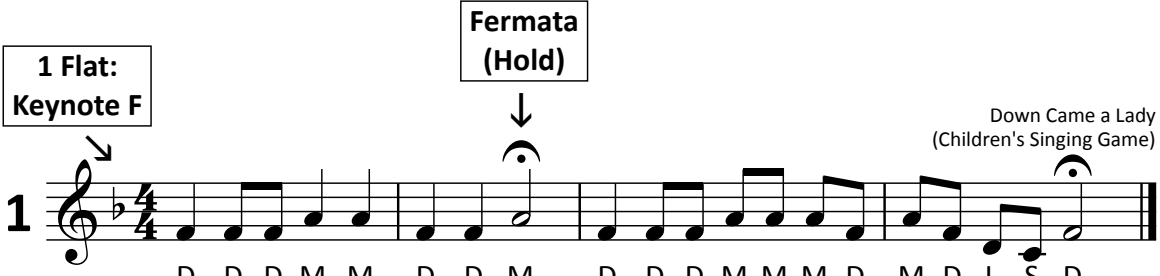
Introducing *LOW SO (S,)* and *LOW LA (L,)*

Fermata 

1 Flat: Keynote F

Fermata (Hold)

Down Came a Lady
(Children's Singing Game)

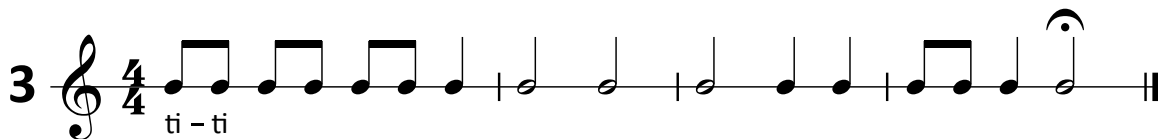
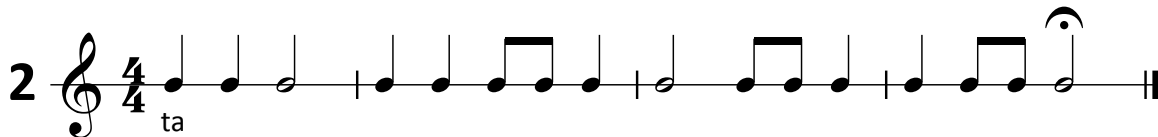
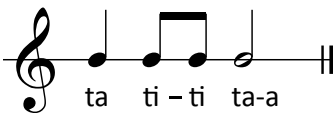


D D D M M D D M D D D M M M D M D L, S, D

Skill Builder: Rhythm Syllables

Use rhythm syllables for the following exercises.

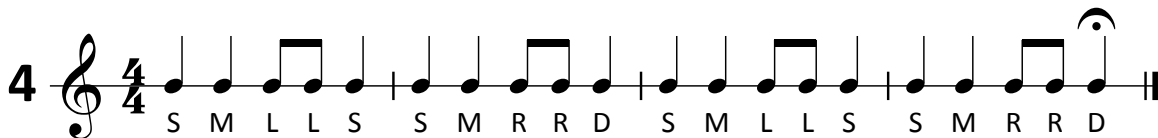
Rhythm Syllables



Skill Builder: Solfège

Follow the rhythm and create the pitches to match the solfège.

Pentatonic Scale



On the Staff

When the keynote is F, *SO* is in space three and *MI* is in space two.

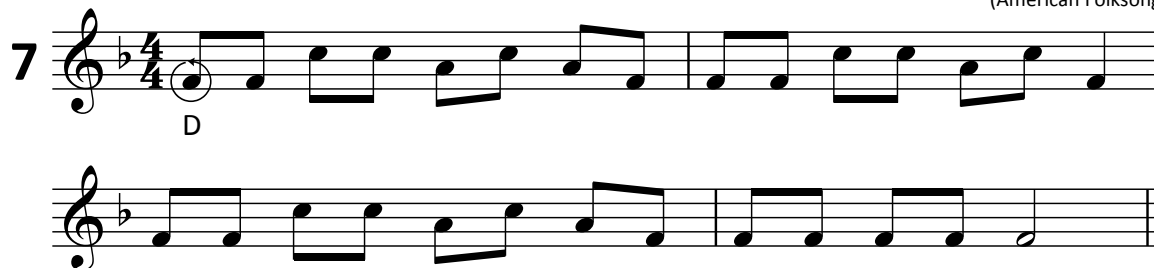
Engine, Engine, Number Nine
(Children's Game Song)



When the keynote is F, *DO* is in space one.

Curfew Song
(American Folksong)

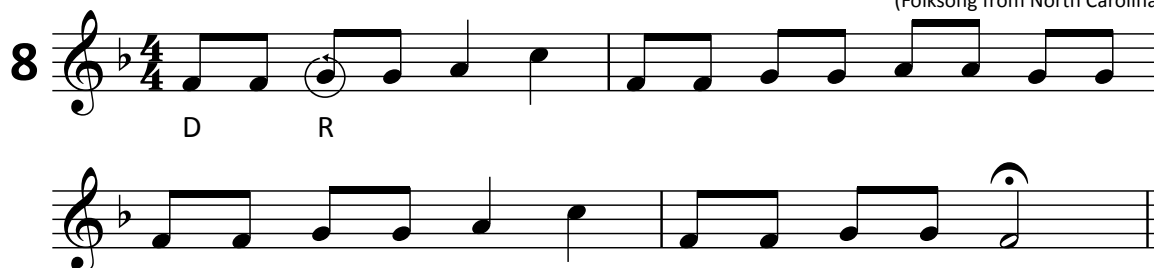
7



RE is on line two.

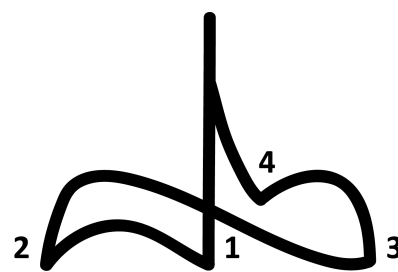
Let Us Chase the Squirrel
(Folksong from North Carolina)

8



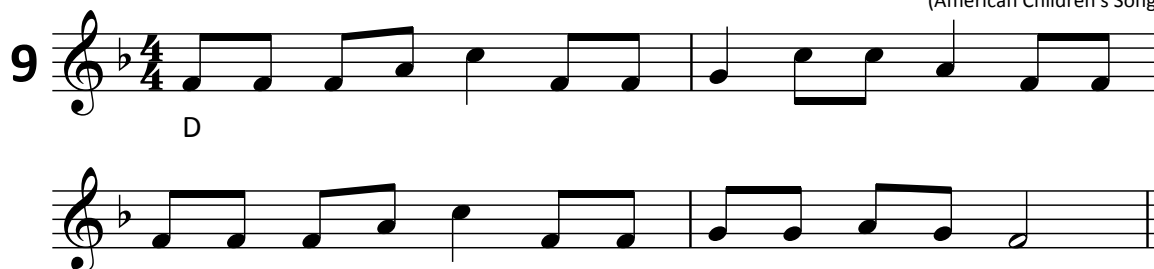
Skill Builder: Conducting

Use the 4-pattern to conduct the following exercise.



Johnny Works with One Hammer
(American Children's Song)

9



Skill Builder: Hand Signs

Use hand signs for the following exercise.



Old Aunt Dinah
(Folksong from North Carolina)

10

On the Staff

When the keynote is F, **LOW LA (L,)** is in the space below the staff.

Cumberland Gap
(Folksong from Tennessee)

11

Jim Along Josie
(Folksong from New York)

12

LOW SO (S,) is the note below **LOW LA (L,)**.

Kreely Kranky
(American Folksong)

13

Hunt the Slipper
(Jamaican Folksong)

14

Creative Sight-singing

Chimes: Divide the class into small groups according to the number of unique pitches in the folksongs below. Each group is assigned to sing *only* that note whenever it appears. The goal is to keep the music smooth and connected while staying absolutely in tune. Use of the metronome is suggested. For an additional challenge, use actual hand bells.

Exercise 1

Pitches Needed: **DO-RE-MI-SO**

Old Mother Brown
(American Folksong)

15

D

Exercise 2

Pitches Needed: **LOW SO-LOW LA-DO-RE-MI**

The Swapping Song
(American Folksong from the South)

D

Exercise 3

Pitches Needed: **LOW SO-LOW LA-DO-RE-MI-SO-LA**

Turn the Glasses Over
(Singing Game from Virginia)

D

The following unit is
the final unit of the
book.

Included in the book are
appendices
with resources for both
the student and the
teacher.

Unit 25

New Concepts

Terminology for Tempo

ritard and *a tempo*

1

The image shows two staves of musical notation for the piece 'Jimmy Crack Corn'. The first staff is marked 'Allegro' and includes a box labeled 'Designation of Tempo'. Below the notes are fingerings: S, S, D D D T, R R S, S, R R R D M M. The second staff includes a box for 'ritard (slowing down)' with an arrow pointing to 'rit.' and another box for 'a tempo (return to previous tempo)' with an arrow pointing to 'a tempo'. Below the notes are fingerings: D D M M M F S L L S S F R D.

Allegro ← **Designation of Tempo**

Jimmy Crack Corn
(American Folksong)

ritard
(slowing down) ↘ *rit.*

a tempo ↙ ***a tempo***
(return to previous tempo)

S, S, D D D T, R R S, S, R R R D M M

D D M M M F S L L S S F R D

7

Skill Builder: Hand Signs

Use hand signs with the following folksong.

do re mi fa so la ti

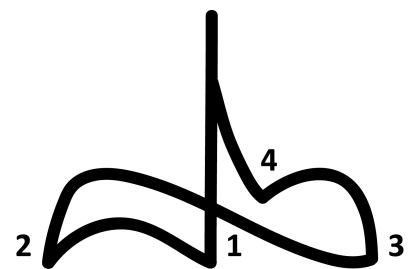
The Bailiff's Daughter of Islington
(British Folksong)

8

Skill Builder: Conducting

Use the 4-pattern to conduct the following exercise.

Note that the folksong begins on an upbeat (beat four).



A-Hunting We Will Go
(Children's Singing Game)

9

On the Staff

The following folksongs utilize tempo markings.

Terminology for Tempo

slower

- grave*: very slow, solemn
- largo*: very slow, stately
- adagio*: slow, leisurely
- lento*: slow
- andante*: moderately slow
- moderato*: moderately

faster

- allegro*: fast
- vivace*: lively, brisk
- presto*: very fast

10 **Adagio** Bury Me Beneath the Willow
(American Folksong)

11 **Allegro** The Brass Mounted Army
(American Civil War Song)

12 **Vivace** Cotton Field Song
(American Folksong)

13 **Moderato** The Bluebird
(Ukrainian Folksong)