

MUSIC WILL SING, Marrolli
SBMP1846

SATB
piano

Music
Will
Sing

Words and Music by
Karen Marrolli



Santa Barbara Music Publishing, Inc.

sbmp.com

About the composer

Karen Marrolli is the Director of Music Ministries at Central United Methodist Church in Albuquerque, NM. She has previously served as Director of Music Ministries at Trussville First United Methodist Church in Trussville, AL, as Director of Choral Ministries at the United Church of Santa Fe in Santa Fe, NM, and as the Artistic Director of the Zia Singers, the Cantu Spiritus Chamber Choir, and the Santa Fe Men's Camerata. Marrolli holds the DMA degree in Choral Conducting from Louisiana State University (2010), where she studied Choral Conducting with Dr. Kenneth Fulton.

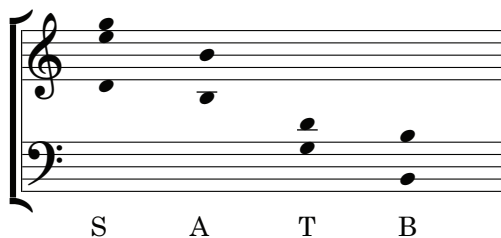
She earned her BM in Music Theory and Composition (1997) and her MM in Choral Conducting and Sacred Music (2000) from Westminster Choir College before relocating to Charleston, SC, where she lived for seven years prior to pursuing doctoral studies. While in Charleston, she founded Lux Aeterna, a chamber choir who presented candlelight concerts in honor of such events as World AIDS Day, the September 11th attacks, and Child Abuse Awareness Month. These concerts always consisted of readings, often written by survivors of traumatic events, interspersed with choral music. The concerts progressed from a sense of darkness to light and were meant to give hope to those who were in a process of healing.

In addition to being a classically-trained composer and conductor, Karen is a prolific singer-songwriter who can be seen performing her own songs at various events in and around Albuquerque. Called "provocative" and "powerful" by listeners, her songwriting is autobiographical and stems from influences that range from piano-driven singer-songwriters such as Tori Amos and Regina Spektor to the acoustic folk sounds of Americana and Irish Traditional Music.

Website: karenmarrollimusic.com



Ranges



rehearsal tracks available at SBMP.COM

Music Will Sing

Words and Music by
Karen Marrolli

Flowing ♩ = 102

Piano *mp*

pedal harmonically

5 Solo or section *mp*

S A

When hearts_ break, mu - sic is heal - ing.

9

Where sad - ness grow mu - sic is joy.

12 *mf*

When souls feel weak, mu - sic will

mf

It is illegal to duplicate this piece by photocopying or any other means.
Those violating the copyright will be punished to the full extent of the law.
© Copyright 2025 for ALL COUNTRIES by Santa Barbara Music Publishing, Inc.
Printed in the U.S.A.

15

strength - en. When words fail, when words

18

fail, mu - sic will sing.

mp

mf

21

Tutti *mf*

S When hearts_ break, mu - sic is heal - ing.

Tutti *mf*

A When hearts_ break, mu - sic is heal - ing, heal - ing.

mf

T When hearts_ break, mu - sic is heal - ing.

mf

B When hearts_ break, mu - sic is heal - ing.

25

mp *mf* *f*

Where sad - ness grows, mu - sic is joy,

mp *mf* *f*

Where sad - ness grows, mu - sic is joy, joy.

mp *mf* *f*

Where sad - ness grows, mu - sic is joy, is joy.

mp *mf* *f*

Where sad - ness grows, mu - sic is joy, is joy.

29

mf

When souls feel weak, mu - sic will strength-en. When words

mf

When souls feel weak, mu - sic will strength - en. When words

mf

When souls feel weak, mu - sic will strength-en. When words

mf

When souls feel weak, mu - sic will strength-en. When words

mf

When souls feel weak, mu - sic will strength-en. When words

This section of the score is not included for copyright protection.
© Copyright 2025 for ALL COUNTRIES by Santa Barbara Music Publishing, Inc.

will sing, will
will sing, will
will sing, will
will sing, will

f *mf* *f* *mf*

p *f* *mf*

40 *f* *mf*

sing. When fear__ reigns, mu - sic is cour -

sing. When fear__ reigns, mu - sic is cour - age.

8 sing. When fear__ reigns, mu - sic is

sing. When fear__ reigns, mu - sic is

44

age. Where ha - tred howls, mu - sic is peace.

Where ha - tred howls, mu - sic is peace.

8 cour - age, Ah, Where ha - tred howls, mu - sic is

cour - age, Ah, Where ha - tred howls, mu - sic is

PREVIEW

48

mp

When dark - ness falls, mu - sic will

mp

When dark - ness falls, mu - sic will

mp

peace, is peace. When dark - ness falls,

mp

peace, is peace. When dark - ness falls,

mp

51

bright - en When words fail, when words

f

bright - en When words fail, when words

mf

mu - sic will bright - en. When words

mf

mu - sic will bright - en. When words

f

1846-8

62 *stagger throughout* *ff*

— sing, will sing, sing,

stagger throughout *ff*

— sing, will sing, sing,

stagger throughout *ff*

— sing, will sing, sing,

stagger throughout *ff*

— sing, will sing, sing,

ff

66 *mf*

— sing, will sing, sing,

mf

— sing, will sing, sing,

mf 3 When hearts

mf When hearts

This section of the score is not included for copyright protection.
© Copyright 2025 for ALL COUNTRIES by Santa Barbara Music Publishing, Inc.

70

When dark - ness falls, when words fail, mu - sic will

When dark - ness falls, when words fail, mu - sic will

break, when words fail, mu - sic will

break, when words fail, mu - sic will

73

sing When souls feel weak, when words

sing When souls feel weak, when words

sing. Where sad - ness grows, when words

sing. Where sad - ness grows, when words



SBMP1846
Code: B12



7 85147 87526 0

76

ff

fail, mu - sic will sing,

ff

fail, mu - sic will sing,

ff

fail, mu - sic will sing,

ff

fail, mu - sic will sing,

ff

fail, mu - sic will sing,

79

mp *f* *molto rit.* *ff*

sing, will sing!

mp *f* *ff*

sing, will sing!

mp *f* *ff*

sing, will sing!

mp *f* *ff*

sing, will sing!

mp *f* *ff*

sing, will sing!

mp *f* *ff* *molto rit.*

sing, will sing!