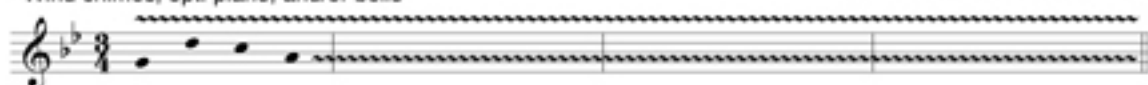


Coventry Carol

Arr. J. Edmund Hughes

*Wind chimes, opt. piano, and/or bells



$\text{♩} = \text{c. } 80$

(Wind chimes cont., bells tacet)

5 9

mp *cresc.* *f*

S1 *bmm* *mp* *cresc.* *bmm* *f* *bmm*

S2 *bmm* *mp* *cresc.* *bmm* *f* *bmm*

A *mp* *bmm* *cresc.* *bmm* *f* *bmm*

T *mp* *bmm* *cresc.* *bmm* *f* *bmm*

B *Unis. mp* *cresc.* *f* *bmm*

Repeat as desired, with each voice
singing independent tempi

11 13

decresc. *mp*

S1 *loo* *loo* (oo)

S2 *loo* *loo* (oo)

A *loo* *loo* *mp* (oo) *Unis. p*

T *loo* *loo* (oo)

B *loo* (oo)

Intro:

1 - Wind chimes solo for approx. 4 measures.

2 - Handbells join wind chimes for approx 2 measures and tacet when voices enter; wind chimes continue through m. 13.

*If desired, piano and/or bells gently and randomly play the choir's chord (m. 6).

**Optional introduction: "When Herod realized that he had been outwitted by the Magi, he was furious, and he gave orders to kill all the boys in Bethlehem and its vicinity who were two years old and under." Matthew 2:16

HEAR A RECORDING OF THIS PIECE and others by J. Edmund Hughes at www.sbmp.com.

© Copyright 2005 for ALL COUNTRIES by Santa Barbara Music Publishing, Inc.

Printed in the U.S.A.

(Wind Chimes tacet)

Solo/soli – very flexible and plaintive

16

mp

S2
Lul - lay, Thou lit - tle ti - ny child, By, by lul -

A

S1
loo

S2
ly, lul - lay. Lul - lay Thou lit - tle ti - ny

A

S1
O sis - ters,

S2
child, By, by lul - ly, lul - lay. O sis - ters,

A
O sis - ters,

31 $\text{♩} = 80$
mf warmly, with motion
Tutti *mf*

S1
too, how may we do, For to pre - serve this

S2
too, how may we do, For to pre - serve this

A
too, how may we do, For to pre - serve this

35

38

S1 day, This poor young - ling for whom we sing.

S2 day, This poor young - ling for whom we sing.

A day, This poor young - ling for whom we sing.

45

S1 *poco ritard* By, by lul - ly, lul - lay. *mp a tempo* Lul - ly, lul - lay thou

S2 *poco ritard* By, by lul - ly, lul - lay. *mp a tempo* Lul - ly, lul - lay thou

A *poco ritard* By, by lul - ly, lul - lay. *mp a tempo* Lul - ly, lul - lay thou

T *poco ritard* By, by lul - ly, lul - lay. *mp a tempo* Lul - ly, lul - lay thou

B *poco ritard* Lul - ly, lul - lay thou

S1 lit - tle ti - ny child, By, by lul - ly, lul - lay.

S2 ti - ny child, By, by lul - ly, lul - lay.

A ti - ny child, By, by lul - ly, lul - lay.

T ti - ny child, By, by lul - ly, lul - lay.

B ti - ny child, By, by lul - ly, lul - lay.

52 **Faster**
f marcato

T
He-rod the King in his rag - ing charg-ed he hath this day, His

B
marcato
He-rod the King in his rag - ing charg-ed he hath this day, His

56

T
men of might in his own sight all chil-dren young to slay.

B
deliberate
men of might in his own sight all chil-dren young to slay.

60 **Tempo primo**
mp

S1
Lul - ly, lul - lay thou lit - tle ti - ny child, By, by lul -

S2
mp
Lul - ly, lul - lay thou ti - ny child, By, by lul -

A
mp
Lul - ly, lul - lay thou ti - ny child, By, by lul -

T
mp
Lul - ly, lul - lay thou ti - ny child, By, by lul -

B
mp
Lul - ly, lul - lay thou ti - ny child, By, by lul -

64

67

mf

S1 ly, lul - lay. That woe is me, poor child for Thee

S2 ly, lul - lay. That woe is me, poor child for Thee

A ly, lul - lay. That woe is me, poor child for Thee

T ly, lul - lay. That woe is me, poor child for Thee—

B Unis. *mf*

For Perusal Only

75

S1 And ev - er mourn and say — For Thy part -

S2 And ev - er mourn and say — For Thy part -

A And ev - er mourn and say — For Thy — part -

T And ev - er mourn and say —

B And ev - er mourn and say

79 Slower

S1 *cresc.* *f* *p*
ing nor say nor sing, By, by lul - ly, lul -

S2 *cresc.* *f* *p*
ing nor say nor sing, By, by lul - ly, lul -

A *cresc.* *f* *p*
ing nor say nor sing, By, by lul - ly, lul -

T *cresc.* *f* *p*
nor say nor sing, By, by lul - ly, lul -

B *cresc.* *f* *p*
nor say nor sing, By, by lul - ly, lul -

For Perusal Only

S1 *mp* *a tempo*
- lay, Lul - ly, lul - lay, thou lit - tle ti - ny

S2 *mp* *a tempo*
- lay, Lul - ly, lul - lay, thou ti - ny

A *mp* *a tempo*
- lay, Lul - ly, lul - lay, thou ti - ny

T *mp* *a tempo*
- lay, Lul - ly, lul - lay, thou ti - ny

B *mp* *a tempo*
- lay, Lul - ly, lul - lay, thou ti - ny

90 Wind chimes/handbells as in intro

child, By, by lul - ly, lul - lay.

child, By, by lul - ly, lul - lay.

child, By, by lul - ly, lul - lay.

child, By, by lul - ly, lul - lay.

child, By, by lul - ly, lul - lay.

For Perusal Only

92

(Wind chimes cont., bells tacet)

96

mp *cresc.*

mp *cresc.*

mp *cresc.*

mp *cresc.*

Unis. *mp* *cresc.*

bmm bmm bmm

bmm bmm bmm

bmm bmm bmm

bmm bmm bmm

bmm bmm bmm

© protection

103 (Wind Chimes tacet)

S1

S2 *Solo/soli*
mp

Lul - lay, Thou lit - tle ti - ny child, By, by lul - ly, lul -

A

T

B

mp 111

S1

S2

A

T

B

loo
Soli

lay. Lul - lay Thou lit - tle ti - ny child,

115 118 *decresc.* Wind Chimes (fade with choir)

S1

S2

A

T

B

decresc.

decresc.

decresc.

mp *decresc.*

mp *decresc.*

By, by lul - ly, loo lul - lay.

Lul - ly, lul - lay.

Lul - ly, lul - lay.

The text of this Renaissance carol was written by Robert Croo in 1534; the song was named after the city of Coventry, England. It was performed in one of the traditional Coventry mystery plays that were based on biblical stories. (*The Pageant of the Shearmen and Tailors* depicted Herod's slaughter of the innocent boys in Bethlehem.) The words "lully, lullay" were common slang meaning, "I saw, I saw!" In the play, the mothers of Bethlehem sang this carol as a lullabye to their children.